

LMW ENGINEERING GROUP, LLC

Integrated



Engineering



Services

BUSINESS PROFILE



125 Lexington Avenue, Linden, NJ 07036

Tel: 908-862-7600, Fax: 908-862-8998

MBE CERTIFIED

A2LA CREDITED SPECIAL INSPECTION AGENCY

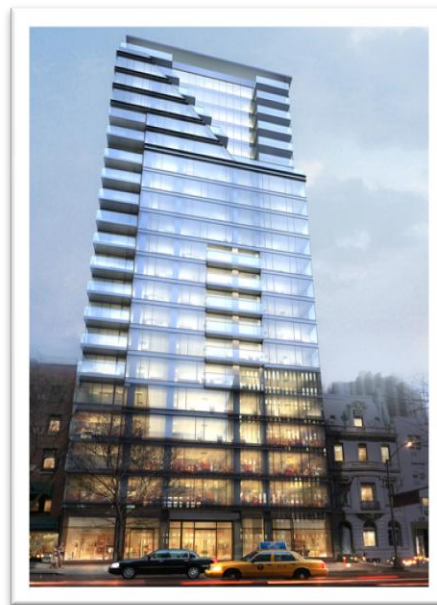
ABOUT US

1

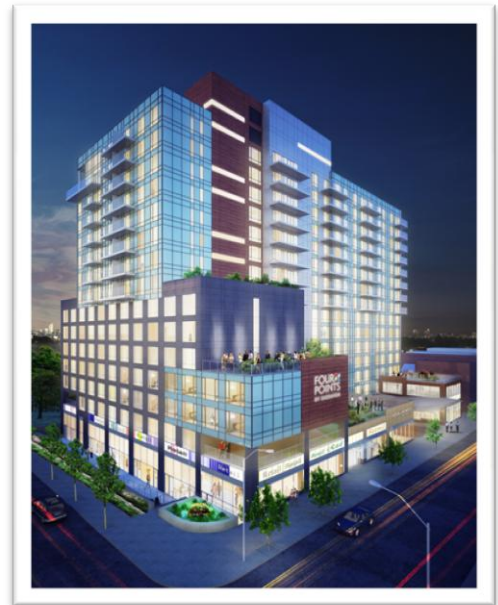
LMW Engineering Group, LLC is a well established engineering company. We started from providing services of evaluating and investigating existing structures. Because of our expertise in addressing site condition related issues and diversified experience and knowledge in structural engineering, the demand for our services expanded from value engineering into complete structural design for new building and large scale building conversion and alteration. Now, we have become a full service civil and structural consulting company. Our client base ranges from architects and developers, to other engineering companies and general construction firms. We pride ourselves for providing clients with the most cost effective design and engineering. We truly believe that cost effective is just as important as sound engineering design.



MAYFLOWER HOTEL
MANHATTAN, NYC



RESIDENTIAL DEVELOPMENT
34TH STREET, NYC



MIX USE DEVELOPMENT
35TH AVE, FLUSHING, NY

ABOUT US



RESIDENTIAL DEVELOPMENT
MANHATTAN, NYC

The key component of our company is that our engineers are engaged in all stages of a project, ensuring our clients timely and high quality services, and continuous accessibility from beginning to end. Our staff consists of licensed professionals and staff engineers with the talent and knowledge required to keep up with the ever-changing structural design and construction technology. They are continuously trained in state-of-the-art technologies and methods, thus keeping LMW a step ahead in the field.

LMW offers design and engineering services in a wide range of areas. LMW is involved in various type of projects, from single story to high-rise buildings, from waste water treatment plants to water front structures. We offer a broad spectrum of civil engineering services, including, but not limited to: design, monitoring, consulting, and special inspection. Regardless of the type and scope of the project, LMW always offer its clients the top quality services in a timely fashion.



MURRAY PARK SOUTH
LONG ISLAND CITY, NY

KEY PERSONNEL

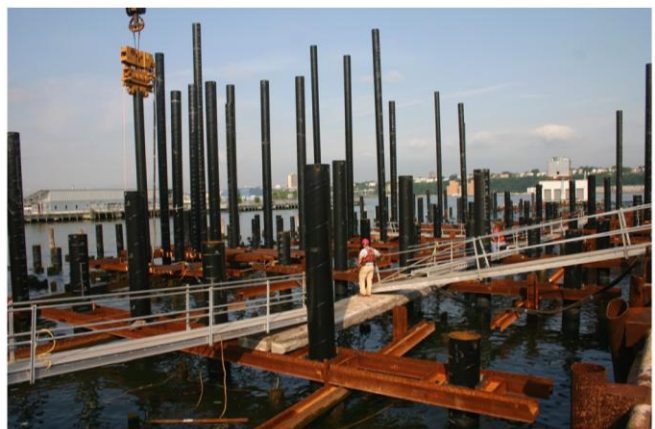
Jieming Wang, P.E. – President

As founding partner and president, Jieming oversees the day-to-day operations of the company. Since starting LMW in 1998, Jieming has managed and participated in numerous projects consisting of structural design, structural evaluation, structural remediation, structural rehabilitation and consultation for many clients in both governmental and private sector.

Prior to LMW, Jieming spent over eight (8) years as a senior engineer with a well established consulting firm. In addition to his engineering supervision duties, he was appointed by the distinguished TNO organization of Holland as its North American Representative. Through the promotion of FPDS testing equipment in the United States, as well as involvement in various projects, Jieming has gained extensive experience and knowledge pertaining to the foundations and geotechnical fields.



2400 TONS LOAD TEST FOR
WHITESTONE EXPRESSWAY



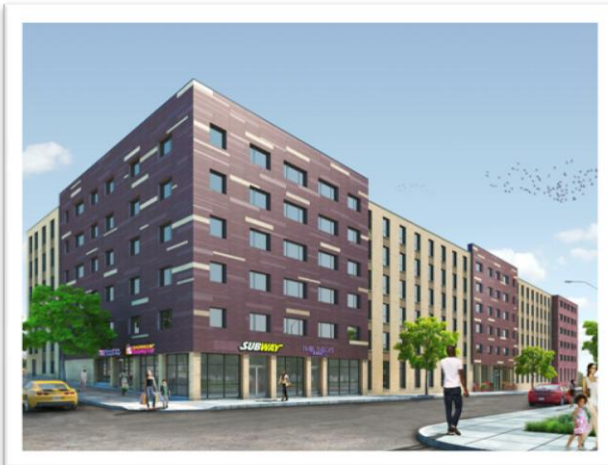
EAST RIVER WATER FRONT & PIER
PROJECTS

KEY PERSONNEL

Babar Imtiaz, P.E. – Director of Operations

As Director of Operations, Babar supervises and coordinates all field operations. As a P.E., Babar's involved in technical consultation, various design and engineering projects.

Babar has extensive experience in design and engineering in the field of foundation and earth retaining structure. Babar's comprehensive design knowledge enables clients to meet deadlines and maintain a cost-efficient project.



THE GLENMORE DEVELOPMENT
BROOKLYN, NY



RESIDENTIAL DEVELOPMENT
ASBURY PARK, NJ

Hashem Khasawneh, P.E. –Senior Structural Engineer

As Senior Structural Engineer, Hashem has a well-rounded academic background and design experience in structural engineering. Since joining LMW, he has been involved in and supervised various design projects.

Hashem supervises most structural analysis, design, and evaluation of new and existing buildings, as well as permanent and temporary soil structures using Computer Aided Structural Analysis and Design Packages.

SCOPE OF SERVICES

- ❖ Structural Design
- ❖ Support of Excavation Design
- ❖ Pre & Post Construction Survey
- ❖ Structural Monitoring
- ❖ Seismic Evaluation and Monitoring
- ❖ Earth Retaining Structure Analysis & Design
- ❖ Special Inspection (NYC CLASS I Agency)



RECONSTRUCTION OF INTREPID AIR & SEA
MUSEUM PIER, MANHATTAN, NYC



DEEP EXCAVATION FOR MIX USE DEVELOPMENT
BROOKLYN, NY

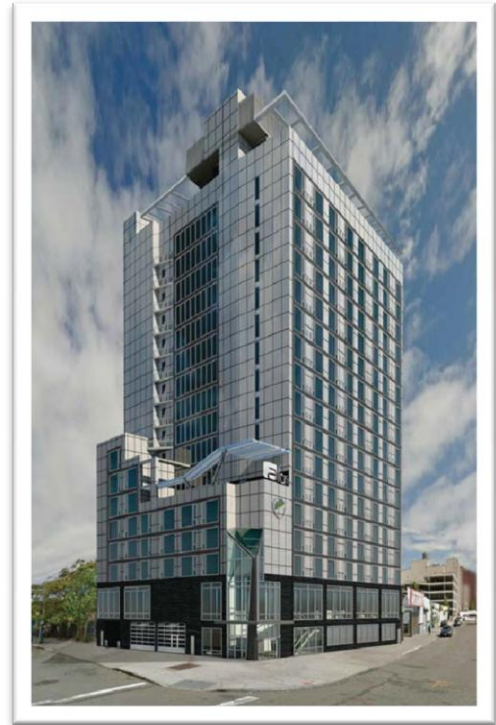
❖ Deep Foundation Engineering

- Pile Foundation Design
- Drivability Study
- Pile Static Load Testing
- Pile Dynamic Load Testing (PDA)
- Pile Integrity Testing
- Pile Driving Inspection

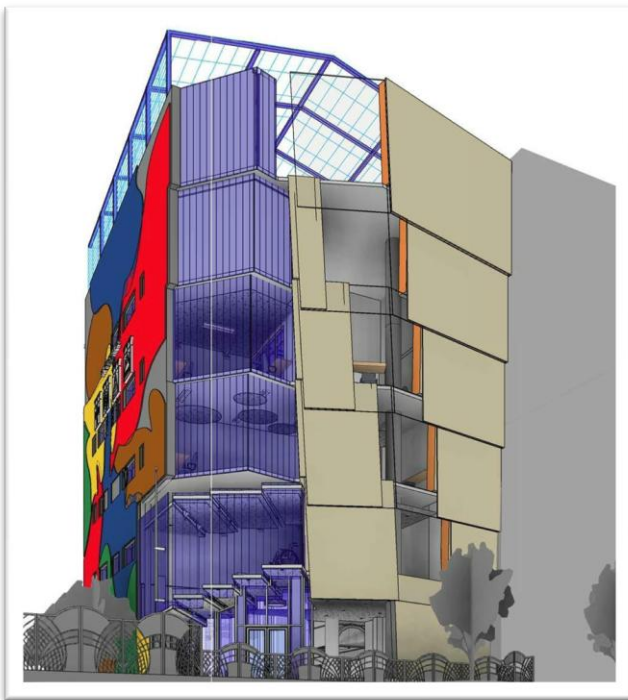
SOME OF OUR CLIENTS

Architects

- ❖ C3D Architect
- ❖ Caliendo Architect
- ❖ Chanhwa Tan Architect
- ❖ JLS Design
- ❖ Magnusson Architecture & Planning PC
- ❖ Michael Kang Architect
- ❖ MS Savani Architect
- ❖ Peter Poon Architect
- ❖ Raymond Chan Architect
- ❖ Shiming Tam Architect
- ❖ Studio Gallos Architect
- ❖ Urban Architectural Initiative



HOTEL ON ARCHER AVE,
QUEENS, NY



BROTHERHOOD – SISTERSOL COMMUNITY
CENTER, BRONX, NYC

Owner / Developers

- ❖ EPOS Development
- ❖ Mayflower
- ❖ NY Lion Group
- ❖ NYC School Construction Authority
- ❖ Port Authority of NY&NJ
- ❖ RJ Hospitality
- ❖ Sackman Enterprises
- ❖ United Development Corp.

SOME OF OUR CLIENTS

General Constructors

- ❖ Cinalta
- ❖ Darcon Construction
- ❖ EIC Associates
- ❖ Falco Construction
- ❖ GCG Industries
- ❖ Galaxy General Contract Corp
- ❖ John P. Picone, Inc.
- ❖ JT Cleary
- ❖ Leon D.Dematteis Const Corp
- ❖ Mayflower
- ❖ Metal Stone Construction
- ❖ Monadnock Construction, Inc.
- ❖ Mullen Construction
- ❖ Perciballi Industries
- ❖ Phoenix Marine
- ❖ R.J. Industries
- ❖ Restani Construction
- ❖ Silverite Construction
- ❖ Simpson & Brown
- ❖ Slattery Skanska
- ❖ Turner Construction
- ❖ Underpinning & Foundation Skanska
- ❖ United Construction



GREEN HOPE
IN HARLEM



CANAL DEVELOPMENT
IN OKLAHOMA CITY

OUR PROJECTS

Public Projects

Baruch College
 Battery Park City Authority - Police Memorial
 Brooklyn Academy of Music
 Brooklyn Navy Yard
 City Wide Ferry Terminals - Marine
 Construction
 COTA (Court Officer's Training Academy)
 East River Water Font & Pier Projects
 FDNY Training Facility, Randall's Island
 Gansevoort Peninsula
 Gerritsen Bridge
 HHRP Piers Reconstruction
 Kosciuszko Bridge
 LGA – LaGuardia Airport
 Morton Street Bulkhead
 Newark Airport
 SCA Projects in NYC
 Various DASNY Projects in NYC



MADISON COURT



HOTEL DEVELOPMENT
DOWNTOWN MANHATTAN



CEDAR DEVELOPMENT

OUR PROJECTS

Private Project

11 Stone Street, Manhattan, NY
 114-01 Atlantic Avenue, Brooklyn, NY
 147-07 88th Avenue, Queens, NY
 149-03 Archer Avenue, Queens, NY
 237 East 34th Street, Manhattan, NY
 2442 Ocean Avenue, Brooklyn, NY
 251-77 Jericho Turnpike, Queens, NY
 319 West 35th Street, Manhattan, NY
 321 West 38th Street, Manhattan, NY
 35th Avenue, Queens, NY
 39-11 Queens Boulevard, Queens, NY
 48 West 36th Street, Manhattan, NY
 58 West 39th Street, Manhattan, NY
 79 Eldridge Street, Manhattan, NY
 88-88 Justice Avenue, Queens, NY
 9-24 Main Avenue, LIC, NY
 91 Junius Street, Brooklyn, NY
 913 45th Street, Brooklyn, NY
 97-11 Sutphin Boulevard, Queens, NY
 Purve Street, Queens, NY



MIX USE DEVELOPMENT
IN BROOKLYN



GRACE PLAZA
MT. VERNON, NY



HOTEL DEVELOPMENT
MIDTOWN MANHATTAN



APARTMENT
BRONX, NY